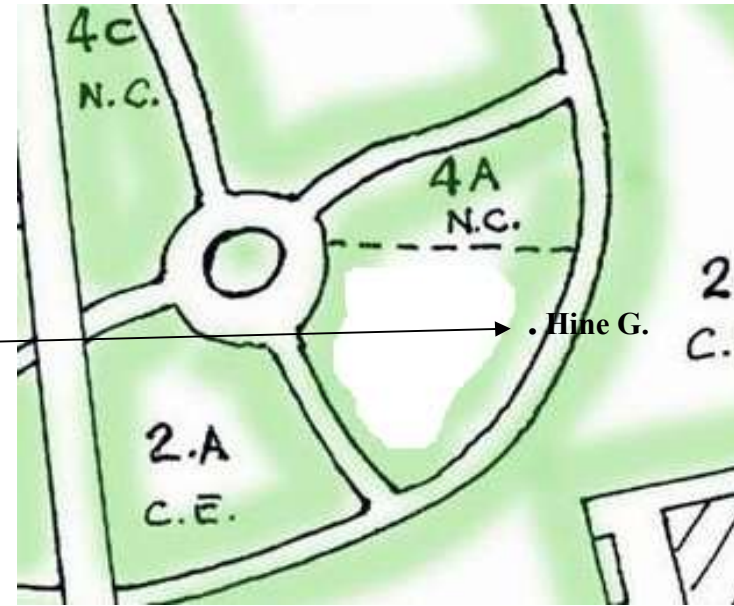
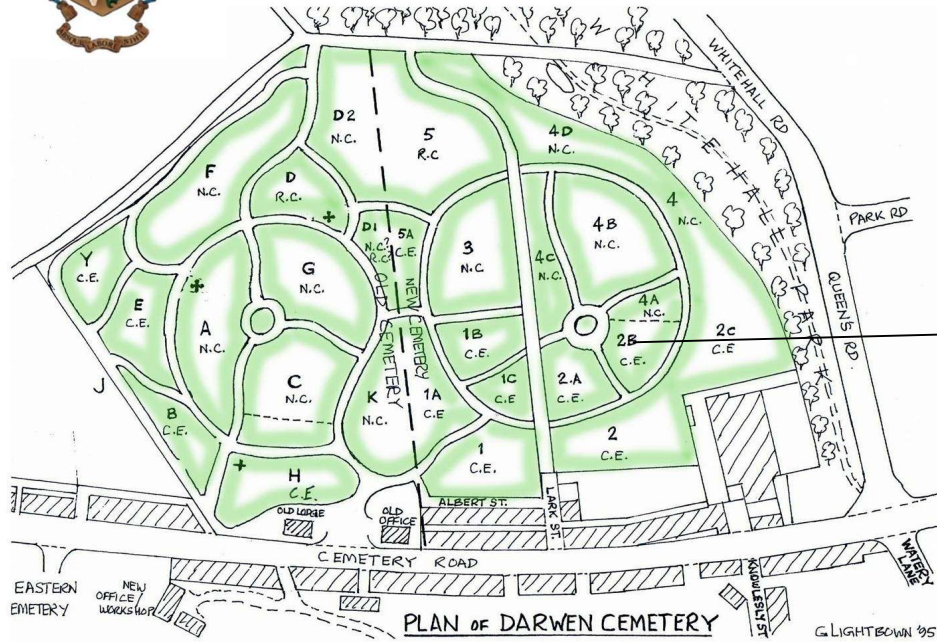




## Hine G. Section 2B Church of England



**Name:** HINE, GEORGE

**Initials:** G

**Nationality:** United Kingdom

**Rank:** Private

**Regiment/Service:** Royal Army Medical Corps

**Date of Death:** 11/05/1915

**Service No:** 28161

**Casualty Type:** Commonwealth War Dead

**Grave/Memorial** Section 2B. 663

**Reference:**



4' grey Granite scroll and kerbs  
Casualty 1<sup>st</sup> inscription..

Adopted by.

Springvale Guides