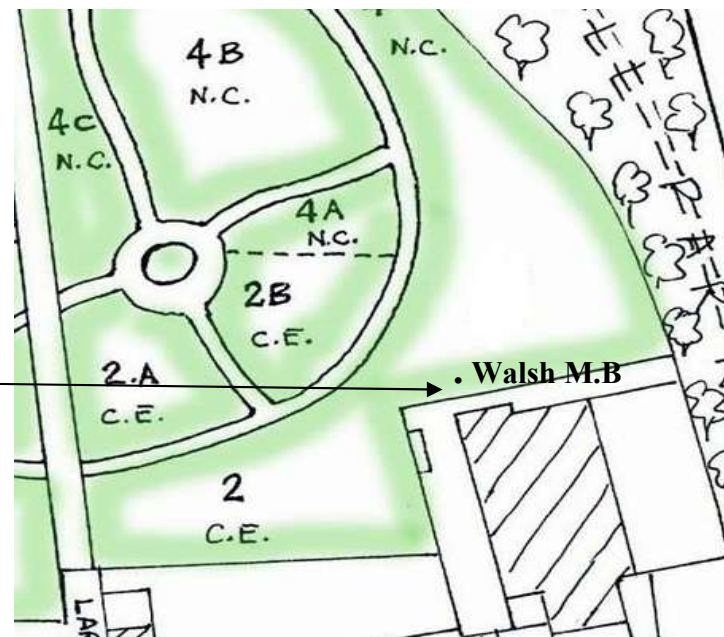
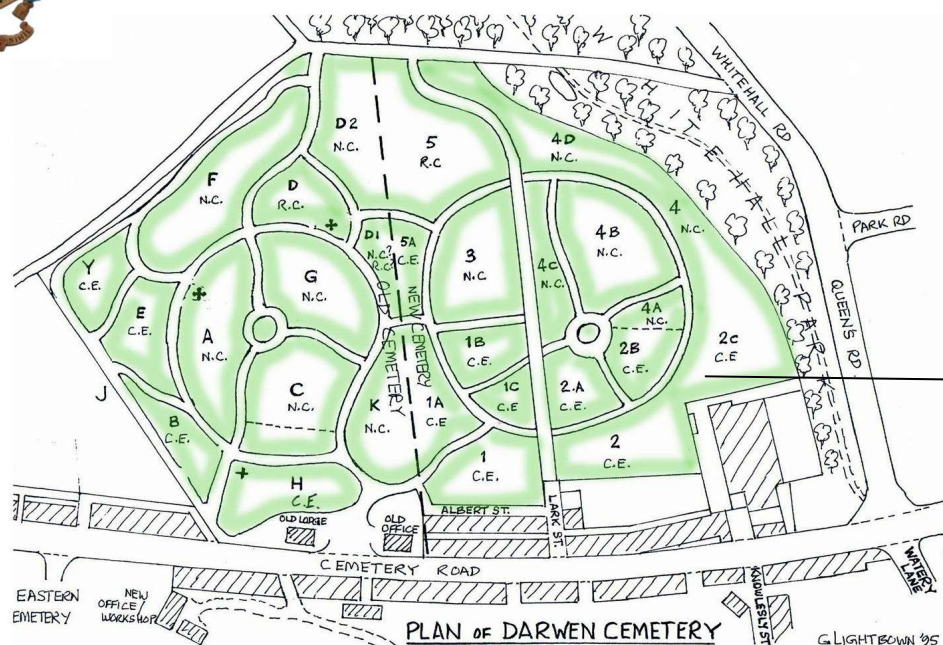




## Walsh M.B. Section 2C Church of England



**Name:** WALSH, MARY BETSY

**Initials:** M.B

**Nationality:** United Kingdom

**Rank:** Worker

**Regiment/Service:** Queen Mary's Army Auxiliary Corps

**Date of Death:** 29/06/1918

**Service No:** 40785

**Casualty Type:** Commonwealth War Dead

**Grave/Memorial** Section 2C. 507

**Reference:**



Headstone made from Stancliffe Stone.

Adopted by  
S. Riding & J. Bennett