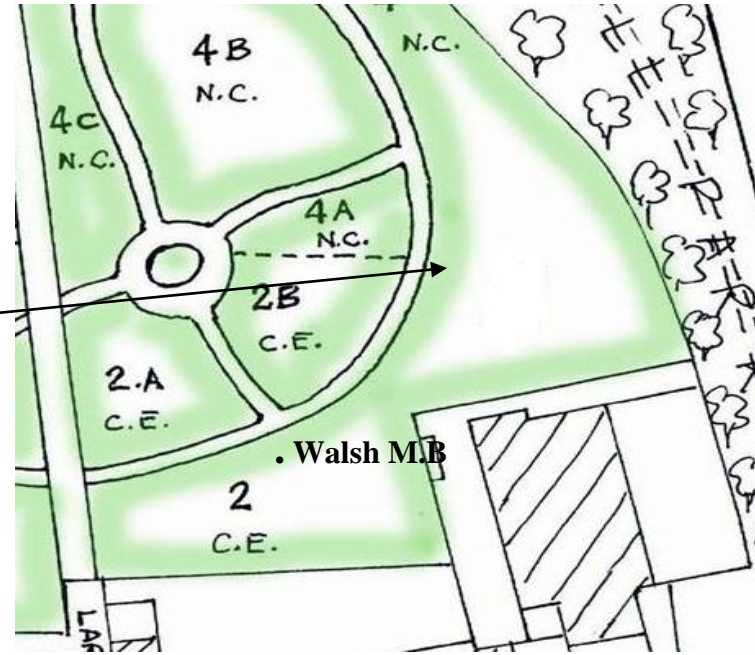
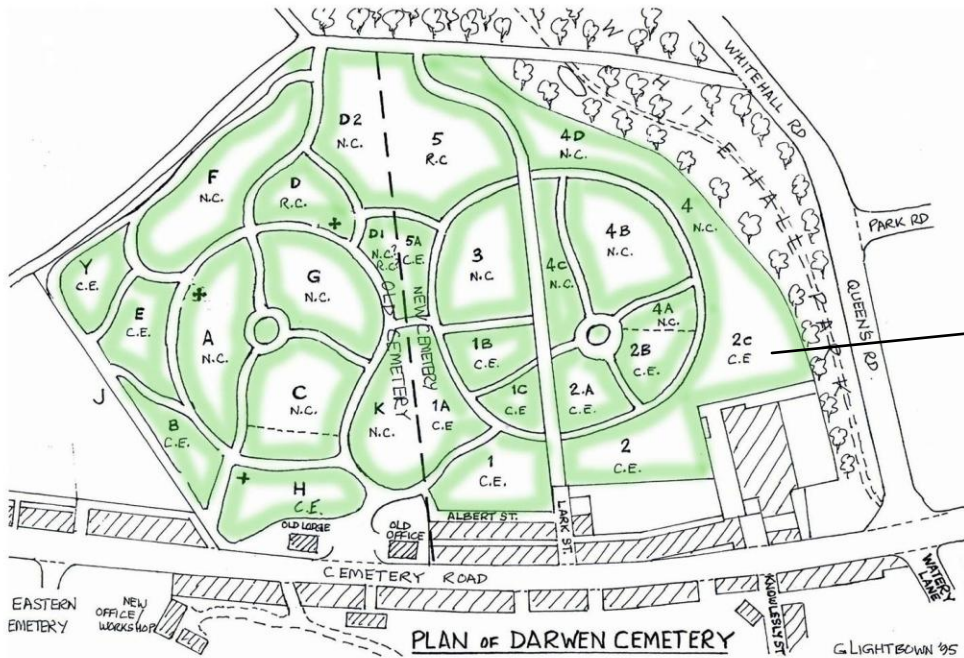


# Walsh M.B. Section 2C Church of England



**Name:** WALSH, MARY BETSY  
**Initials:** M.B  
**Nationality:** United Kingdom  
**Rank:** Worker  
**Regiment/Service:** Queen Mary's Army Auxiliary Corps  
**Date of Death:** 29/06/1918  
**Service No:** 40785  
**Casualty Type:** Commonwealth War Dead  
**Grave/Memorial Reference:** Section 2C. 507.  
**Cemetery:** [DARWEN CEMETERY](#)



Headstone made from Stancliffe Stone.

Adopted by  
S. Riding & J. Bennett